

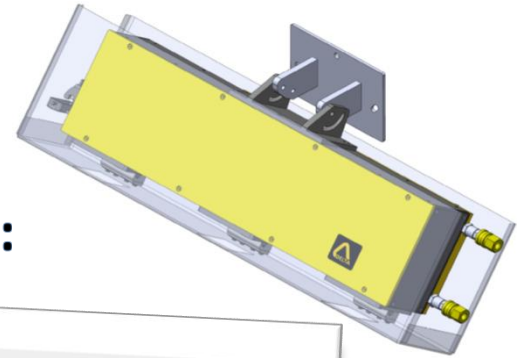
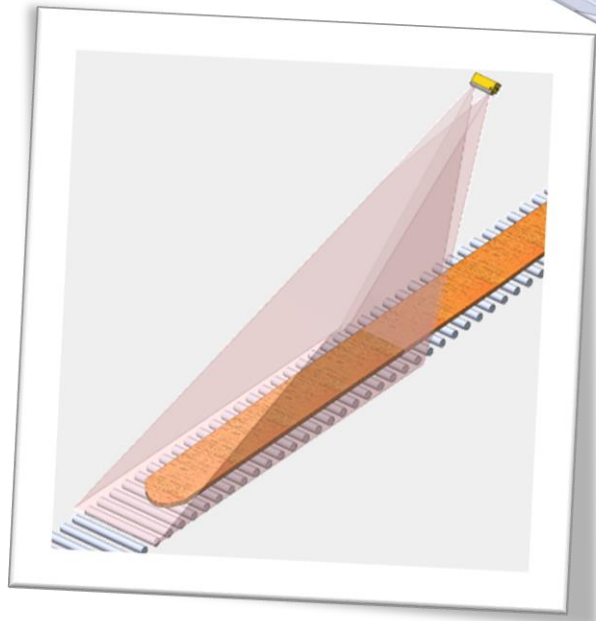
# StereoVision SV6000



**New**

## High resolution stereo camera 3D gauge:

- Width
- 3D contour:
  - Camber
  - Head/tail shape



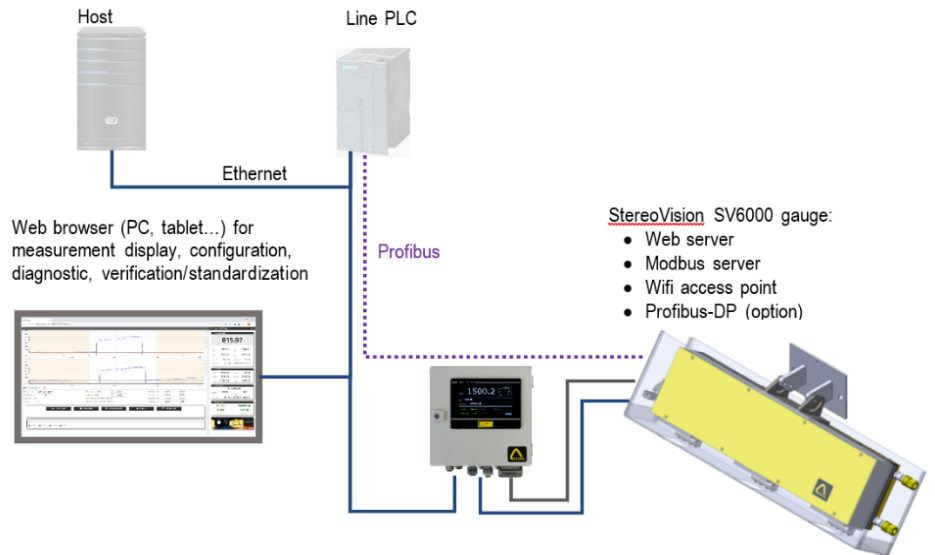
- ✓ Field of view **up to 10 m**
- ✓ 2 x high resolution camera 4096 \* 2168 pixels at 20 Hz
- ✓ Product temperature over 700°C
- ✓ Setup & Diagnostic of the gauge **with a web browser**
- ✓ Extended communication features including **built in Ethernet and Wifi** with Modbus TCP and OPC UA protocols
- ✓ Optional industrial network protocols: **Profibus DP, Profinet**
- ✓ On line verification and standardization to maintain high measurement accuracy
- ✓ Recording of measures and advanced log features
- ✓ **Plug-in principle** to customize: protocol, External I/O, configuration...
- ✓ Simplicity of installation and maintenance, **very quick replacement** of the gauge
- ✓ Laser cross for easy commissioning and verification of accuracy
- ✓ **Designed for extremely harsh environment:** compact water cooled sealed die-cast aluminium housing, heat shield, Air Knife...



## Connectivity

**StereoVision SV6000** with built in Ethernet connection, integrated digital inputs / outputs and analogue outputs, has a very flexible communication architecture and can easily be connected into any automation system.

The gauge has an integrated **Web server** and the connection to the gauge with any Web browser from a PC, a tablet gives an access to gauge measurement data and configuration parameters. Remote access is possible for diagnostic assistance.

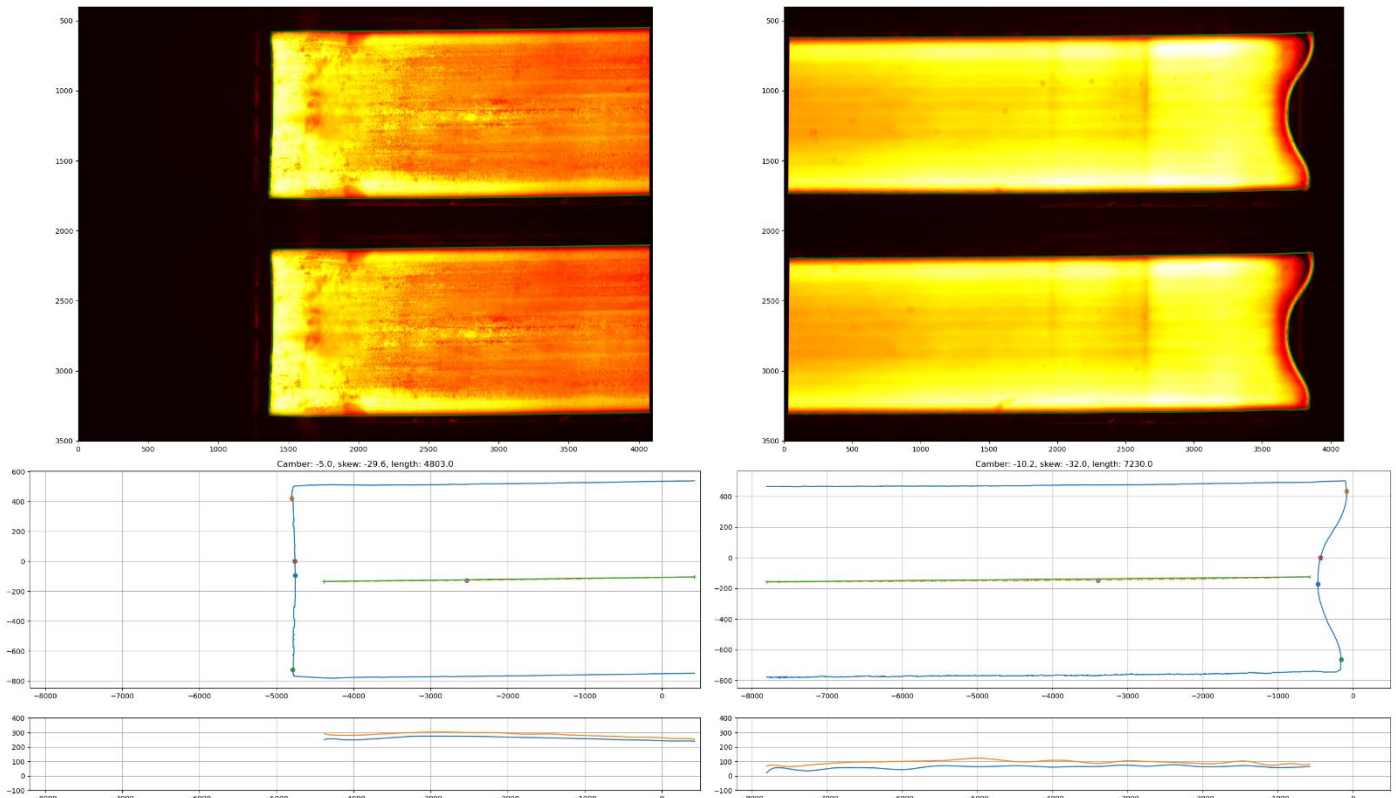


## Application

Example: Installation at the **exit of a reversing rougher**.

Head shapes are displayed at the different passes and tail at the last pass with 3D data.

Typical display: High resolution stereoscopic images with contours and projection of the 3D head and tail points on a length of 8 m.



Please contact us for more details.

[www.deltasensor.eu](http://www.deltasensor.eu)

